



4TH STREET REVITALIZATION – PHASE 2

Public Meeting | February 21, 2024



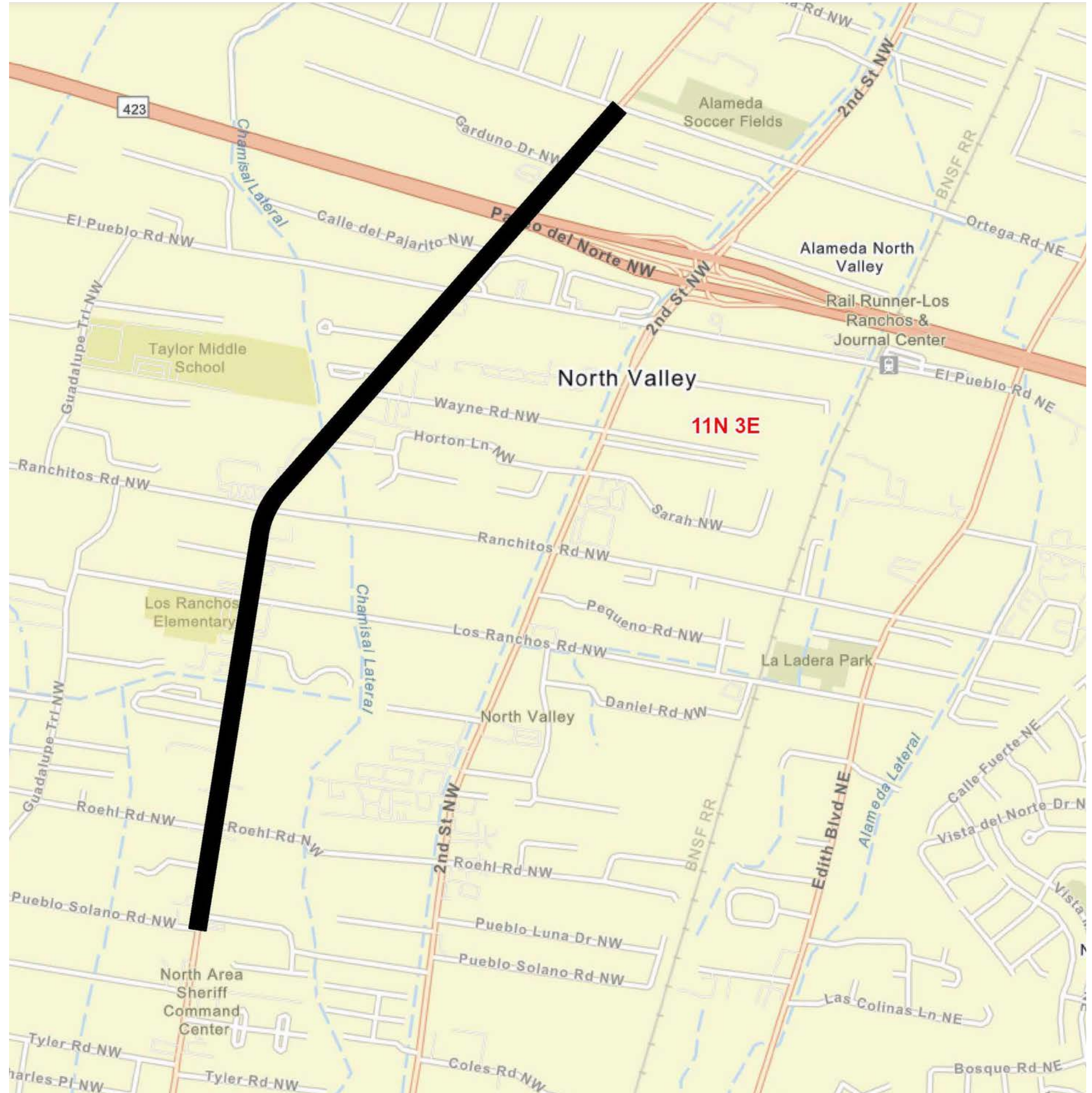
Bohannon  **Huston**

pland
COLLABORATIVE

4TH STREET REVITALIZATION – PHASE 2

Vicinity Map

This project is a continuation of the Phase 1 project which was constructed between Schulte Road and Pueblo Solano. Phase 2 will start at Pueblo Solano and end at the Village limits a few hundred feet north of Ortega Road. Bernalillo County just started design of a lane reduction design to match the Village lane configuration that will continue the project to Alameda.



Project Map by Bohannan Huston

4TH STREET REVITALIZATION – PHASE 2

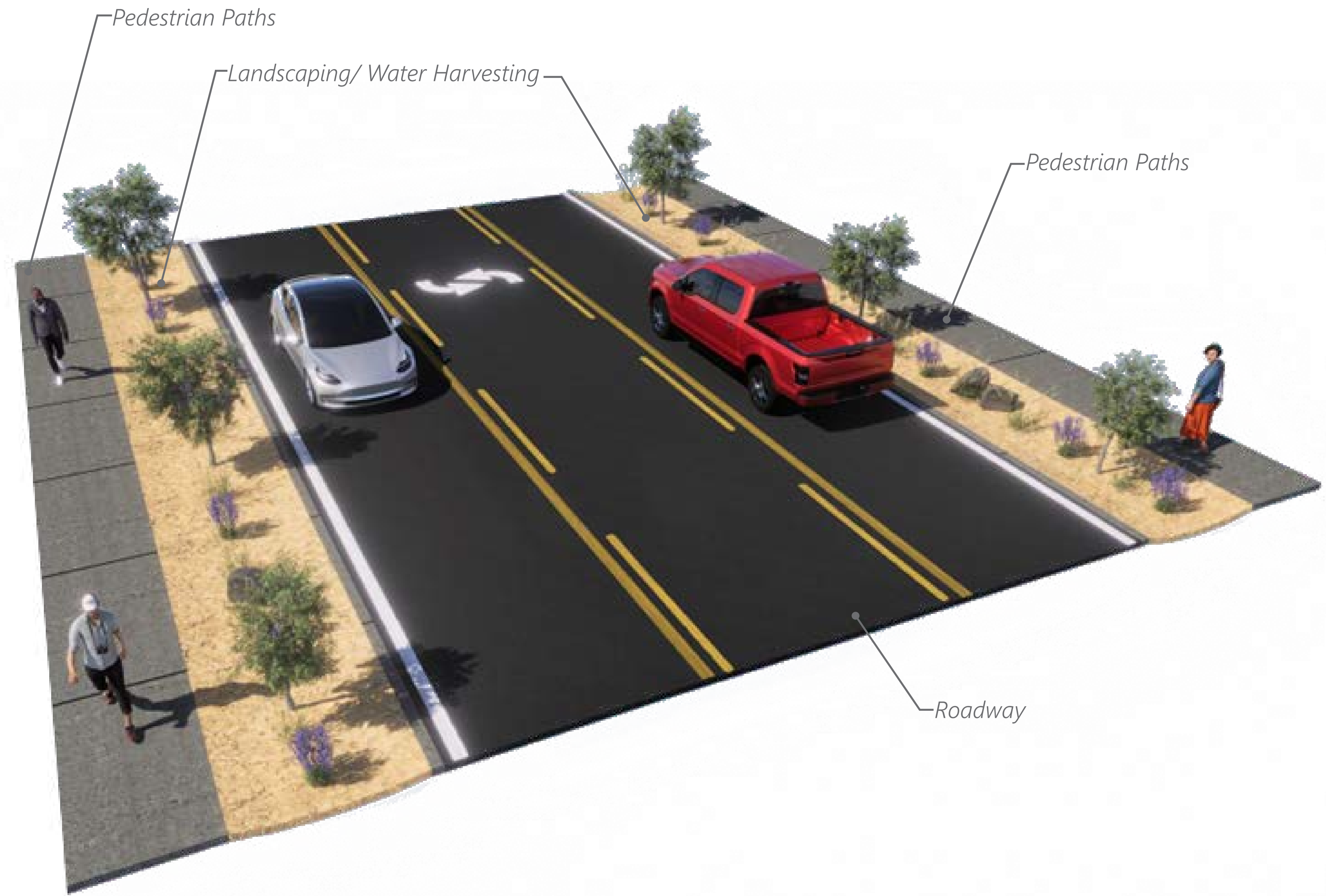
Typical Section

SIDEWALK WITH ESTATE CURB ON BOTH SIDES

The proposed roadway section will be one lane in each direction with a center turn lane and sidewalk on both sides. The driving lanes will be 9.5' wide to slow traffic. A flat estate curb will keep the edge of the road from breaking and delineate the road from the landscaping for drivers. Rainwater will flow right over the curb into the landscaping. This typical section was selected by public input in March 2022 and approved by the board of trustees in May 2022.

TYPICAL CONDITIONS

- Good ADA pedestrian sidewalks on both sides
- Allows for bus shelters on both sides
- Landscaping / Water Harvesting / Low-Impact Development
- Storm water picked up in landscaping instead of drop inlets



Typical Section Plan by Bohannon Huston

4TH STREET REVITALIZATION – PHASE 2

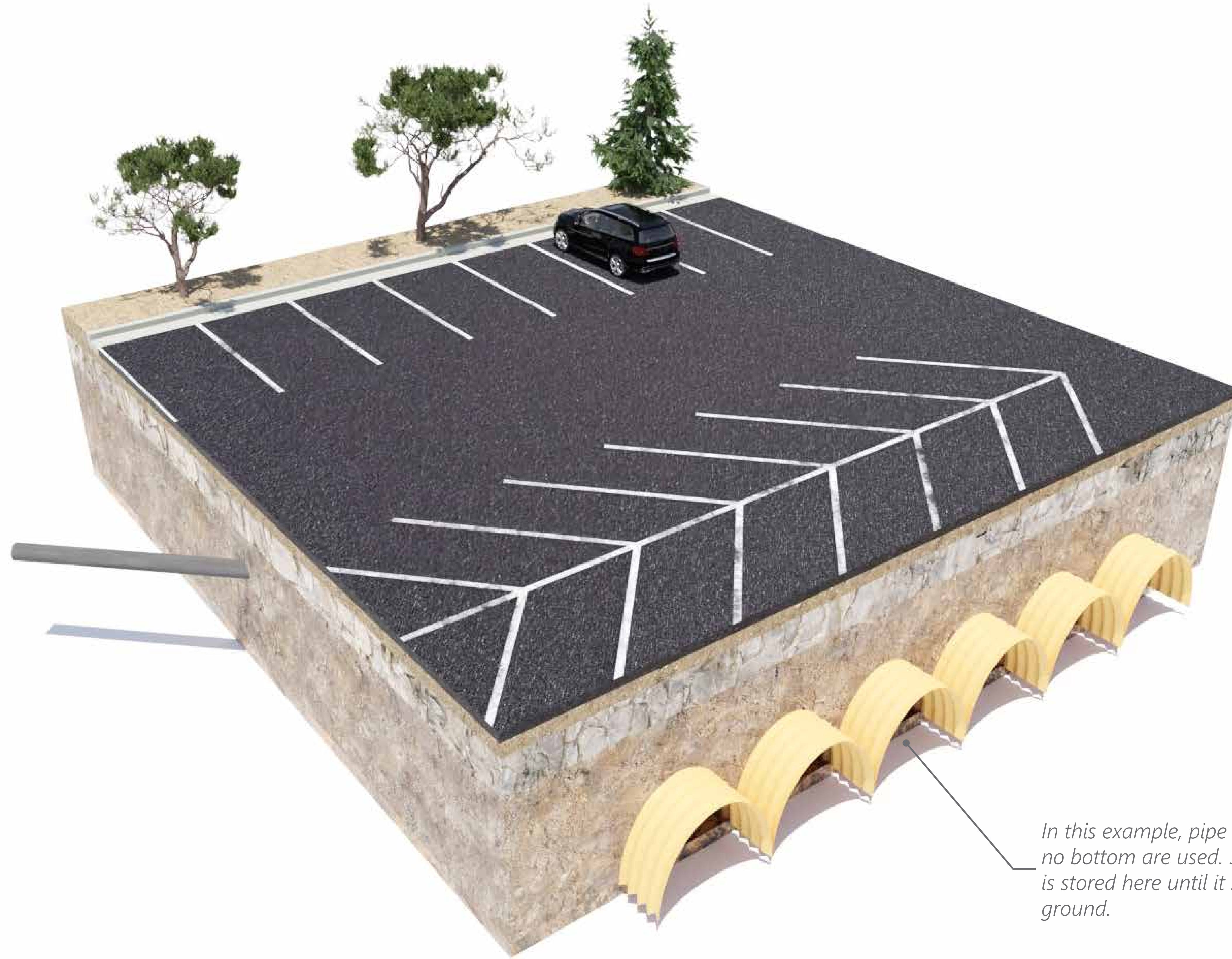
Underground Storm Water Storage & Infiltration

STORM WATER INFILTRATION

Stormwater enters inlets located in the landscape areas along the roadway and travels through pipes to an underground storage system. In this example, pipe arches with no bottom are used. Storm water is stored here until it soaks into the ground. The surface above the storage system can be used as a parking lot or park.

BENEFITS:

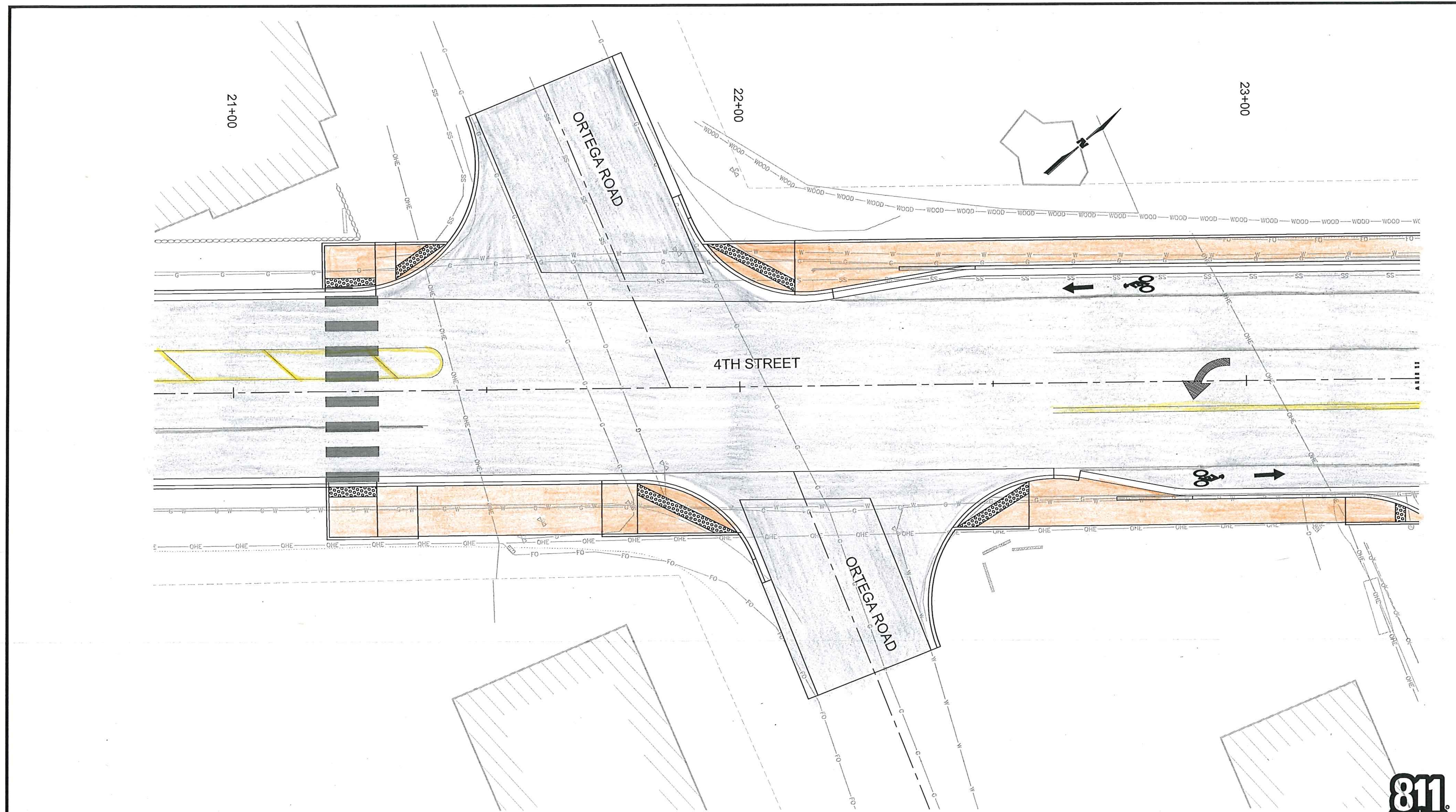
- Replenishes groundwater
- Storage systems are made by many different companies
- Property can become a park or a parking lot
- Landscape and streetscape element aesthetics



Underground Stormwater Storage & Infiltration by Bohannon Huston

4TH STREET REVITALIZATION – PHASE 2

Bernalillo County Design at Ortega Road



ORTEGA ROAD INTERSECTION BULB OUT EXHIBIT
SCALE 1"=10'

CONSULTANTS
WILSON & COMPANY
4401 UNIVERSITY BLVD., SUITE 150
ALBUQUERQUE, NM 87105
PHONE: 505-348-4000
FAX: 505-348-4055
www.wilsonco.com

BENCHMARKS
THE STATION IS LOCATED 7.5 MILES NORTH OF THE INTERSECTION OF 4TH STREET AND ST. FRANCIS ROAD AND 7.5 MILES WEST OF THE INTERSECTION OF 4TH STREET AND CENTRAL AVENUE CO NORTH ON 4TH STREET 7.6 MILES TO THE STATION ON THE RIGHT. THE STATION MARK IS A CITY OF ALBUQUERQUE SURVEY CONTROL 3 1/4 INCH ALUMINUM DISC SET 0.1 FOOT ABOVE GROUND AND IS STAMPED "B-C16 1985".

60% PLANS NOT FOR CONSTRUCTION

| NO. | DATE | DESCRIPTION | CONTRACTOR | DESIGNED BY: | DATE: |
|-----|------|-------------|------------|--------------|---------|
| | | | | SML | |
| | | | | MLL | |
| | | | | AVG | |
| | | | | | 12/2023 |

INSPECTOR'S ACCEPTANCE BY: _____ DATE: _____
FIELD VERIFICATION BY: _____ DATE: _____
DRAWINGS CORRECTED BY: _____ DATE: _____

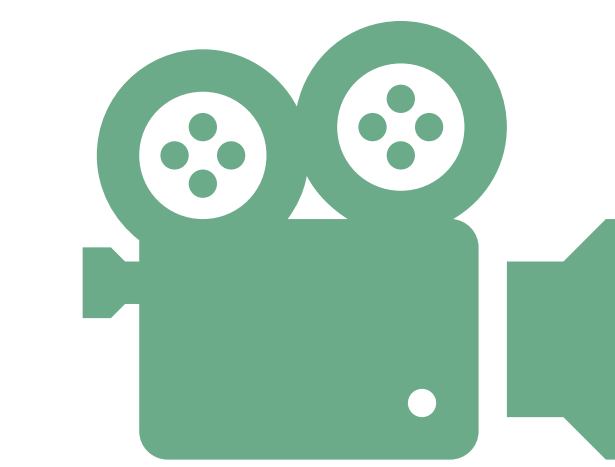
811
CALL NM ONE-CALL
SYSTEM SEVEN (7) DAYS
PRIOR TO ANY EXCAVATION

| | |
|--------------------------------|--|
| | BERNALILLO COUNTY PUBLIC WORKS DEPARTMENT |
| | 4TH ST. ROAD DIET RECONSTRUCTION 4TH STREET AND ORTEGA ROAD BULB OUT EXHIBIT |
| ZONE MAP NO. B16, C15 & C16 | COUNTY PROJECT NO. A302152 |
| SHEET NO. | 3-12 |

4TH STREET REVITALIZATION – PHASE 2

El Pueblo Crash Data

| Year | Number of Crashes | Type | Severity |
|------|-------------------|---|---------------------------------------|
| 2017 | 3 | One Left Turn / Pedestrian, not impaired Same Direction Rear-end Collision Improper Turn | 1 fatal pedestrian 1 injury PDO |
| 2018 | 3 | Opposite Direction / One Left Turn Right turn / Entering at Angle Opposite Direction / Alcohol involved / Spun out of control | 1 injury PDO 3 injuries |
| 2019 | 4 | Opposite Direction / one Left Turn Same Direction / One Left Turn Opposite Direction / Sideswipe Same Direction Read-end Collision | PDO 3 injuries PDO PDO |
| 2020 | 1 | Same Direction Read-end Collision | PDO |



**El Pueblo Road
roundabout
drive-through**



4TH STREET REVITALIZATION – PHASE 2

El Pueblo Roundabout Benefits

INCREASED PEDESTRIAN SAFETY

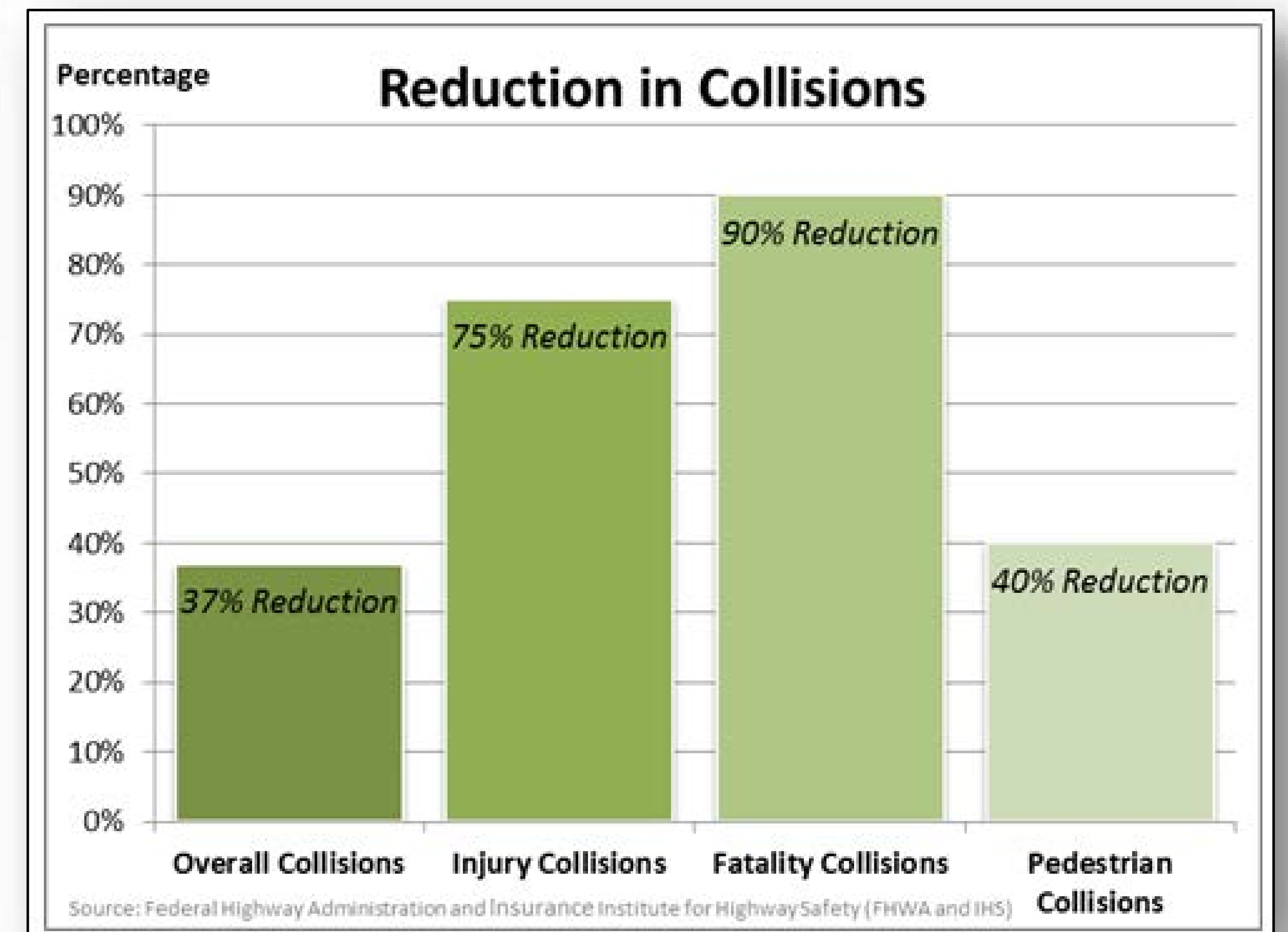
If a Person Is Hit by a Car Travelling...



● If hit by a car travelling: ● Results in fatality ● Person survives



REDUCED COLLISIONS



4TH STREET REVITALIZATION – PHASE 2

El Pueblo Roundabout Benefits

REDUCED CONFLICT POINTS

● **Diverging Conflicts:**

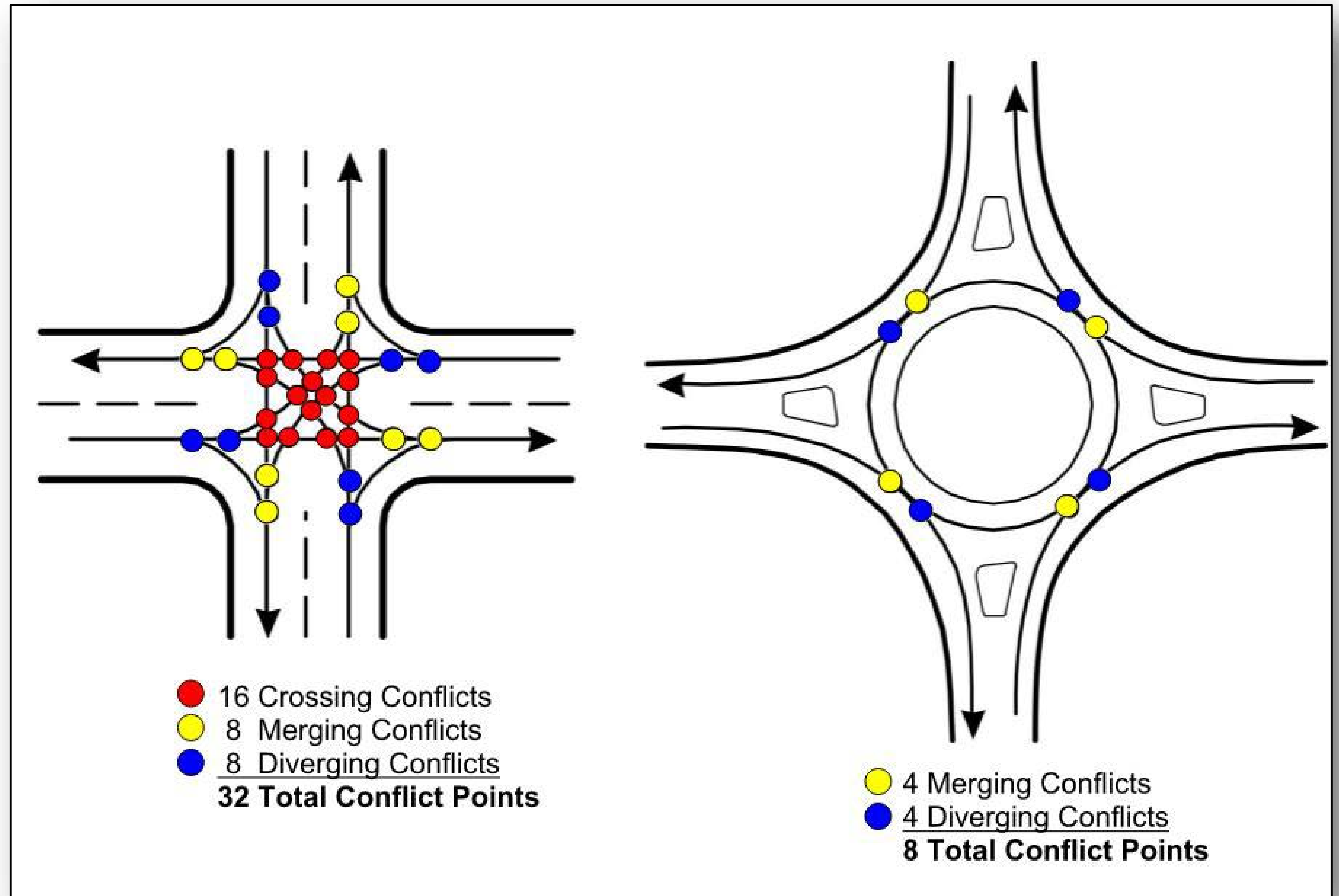
- Caused by the separation of two traffic streams
- Higher speed differentials increase risk of rear-end collision (low severity)

● **Merging Conflicts:**

- Caused by the joining of two traffic streams
- Higher possibility of collision to the side of the vehicle (medium severity)

● **Crossing Conflicts:**

- Occur where the path of two streams intersect
- High risk of right-angle crashes and head-on crashes (most severe)



4TH STREET REVITALIZATION – PHASE 2

Project Schedule

| Task | Date |
|--|-------------------------|
| STUDY & PRELIMINARY DESIGN | |
| Public Information Meeting | March 23, 2022 |
| Board of Trustees Meeting | May 10, 2022 |
| FINAL DESIGN | |
| Public Information Meeting #1 - Kickoff | May 17, 2023 |
| Public Information Meeting #2 - Aesthetics | August 1, 2023 |
| Property Owner Open Houses | September 19 & 20, 2023 |
| Public Information Meeting #3 – Final Design | February 21, 2024 |



4TH STREET REVITALIZATION – PHASE 2

National Environmental Protection Act

NEPA COMPLIANCE

- **State Historic Preservation Officer** - No impacts to historic properties
- **Biological Surveys Completed** - No biological resources impacted
- **Hazardous Materials Testing** - Drilling indicates no hazardous materials in soil. Samples submitted to lab for testing.
- **Water Resources** - Storm water harvesting & permeable pavement helps clean water before entering water table.
- **Slower Traffic** - Less traffic noise
- **Additional Pedestrian Facilities** - Improves Health and Safety
- **Air Quality** - Slower traffic produces more air pollutants. Landscaping removes carbon dioxide from air.
- **Visual Resources** - A mixture of hardscape and natural materials will create a pleasing aesthetic
- **Reduced Asphalt Paving** - Lane reduction will decrease the amount of asphalt paving

4TH STREET REVITALIZATION – PHASE 2

Funding

FUNDING PHASES

- **Engineering and design (funding complete):** *\$1,078,858*
- **Right of way:** *\$1,000,000* Covid Relief Funds October 2023 - August 2024

- **Construction Cost Estimate:** *\$28,000,000*
- **Phase 2A - Pueblo Solano to Ranchitos Road:** *\$10,049,373*
 - State Funding Secured - *\$3,425,000*
 - Federal Funding Secured- *\$6,624,373*
- **Phase 2B - Ranchitos to Paseo del Norte Overpass**
 - No Funding Secured
- **Phase 2C - Paseo del Norte Overpass to Village Limits**
 - No Funding Secured

4TH STREET REVITALIZATION – PHASE 2

Site Furnishings & Materials

SITE FURNISHINGS



Custom Wood and Steel Bench with Revised Back Design for Comfort



Custom Bus Shelter



Forms and Surfaces Twist Bike Rack



Wabash Valley Urbanscape Litter Receptacle



Dog Waste Dispensers

MATERIALS

PAVING



Concrete with Integral Color and Salt Finish



Endicott Brick Pavers (Over Base Course)



Riccobene Cobblestones (Set in Concrete)

ROCK



'Amaretto Brown' 2"-4" Cobble Mulch



'Amaretto Brown' 3/8"-1" Gravel Mulch



'Desert Driftwood' Accent Boulders

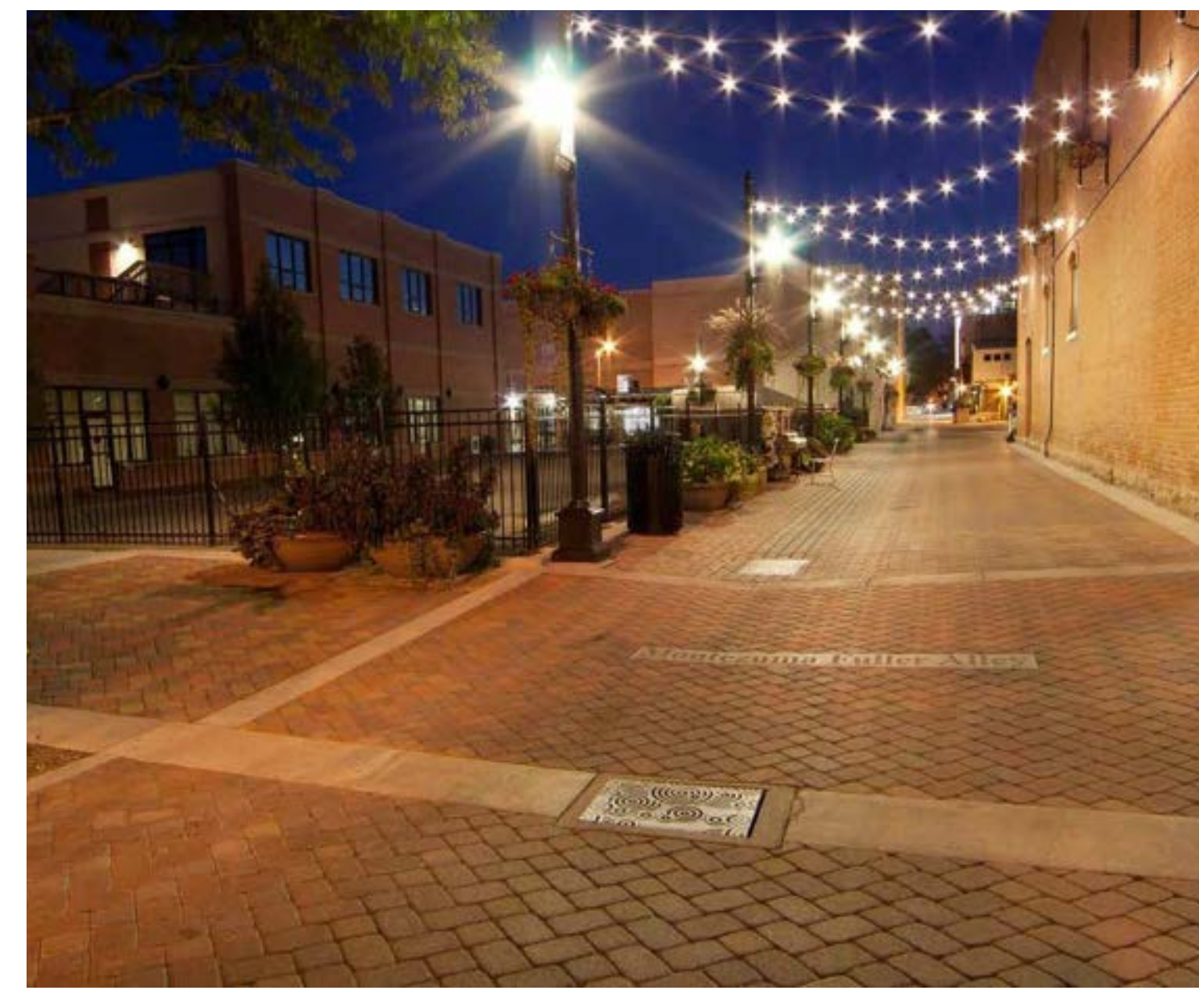
LIGHTING



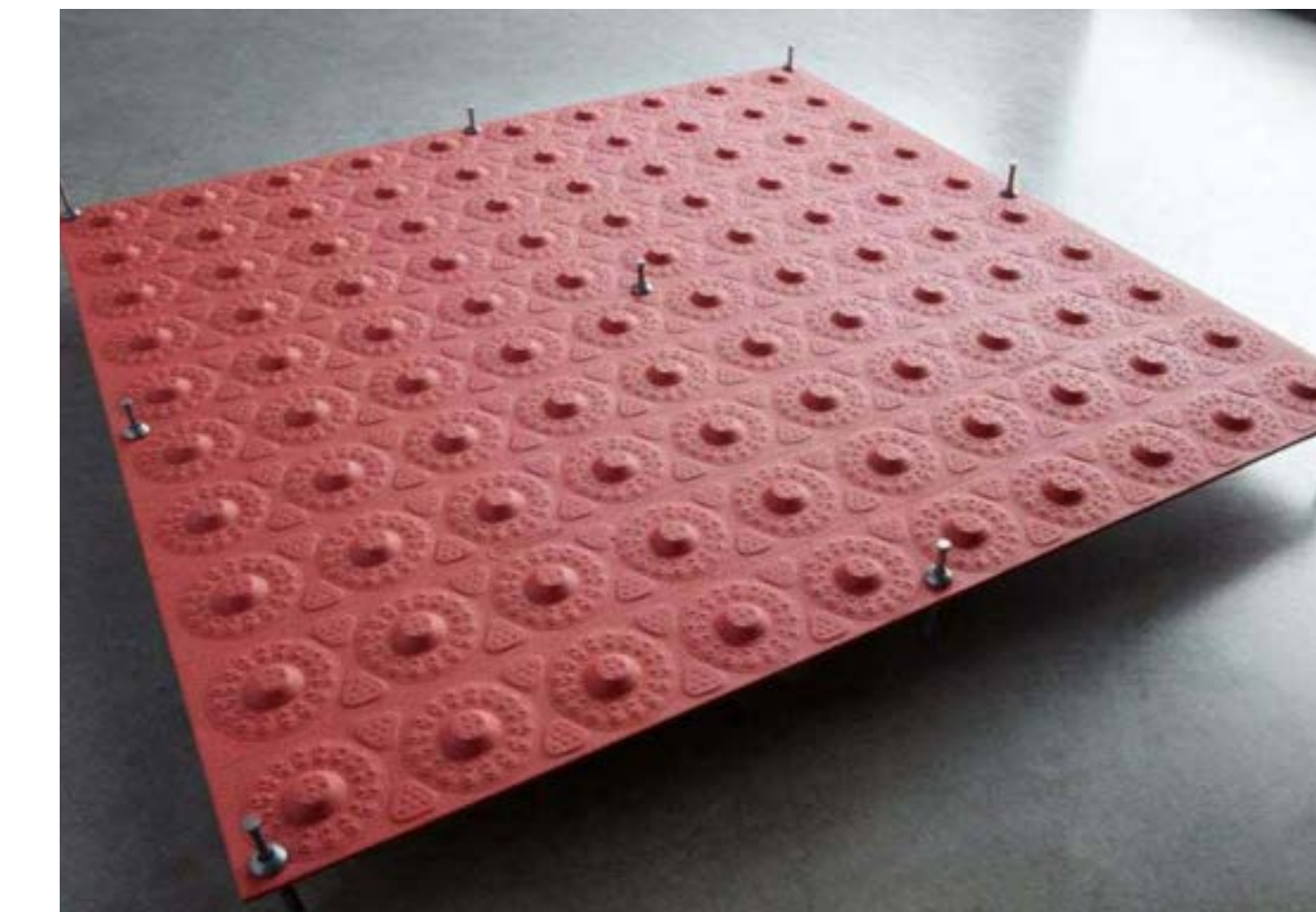
Pedestrian Lighting



Catenary Lights



DETECTABLE WARNING SURFACING



Tuftile Powder-Coated Galvanized Steel

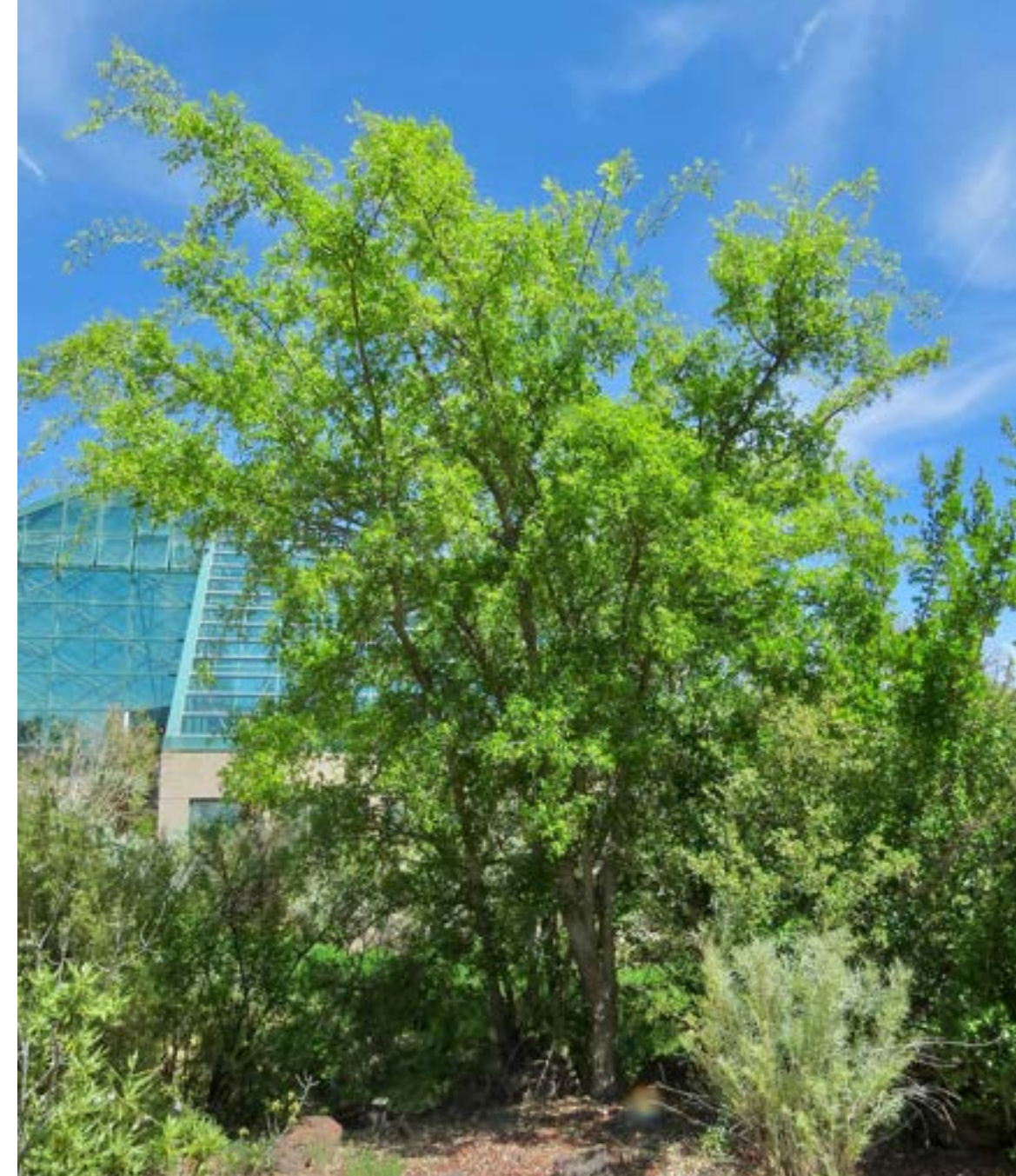
4TH STREET REVITALIZATION – PHASE 2

Streetscape Plant Palette

TREES



Sensation Box Elder
Acer negundo 'Sensation'



Netleaf Hackberry
Celtis reticulata



Emerald Sunshine Elm
Ulmus propinqua 'JFS-Bieberich'



Frontier Elm
Ulmus x 'Frontier'

DESERT ACCENTS



Walk In Beauty Prickly Pear
Opuntia x 'Walk In Beauty'



Pale Leaf Yucca
Yucca pallida

SHRUBS



Sand Sagebrush
Artemisia filifolia



Dwarf Chamisa
Chrysothamnus nauseosus nauseosus



Grosso French Lavender
Lavandula x intermedia 'Grosso'



Pawnee Buttes Sand Cherry*
Prunus besseyi 'Pawnee Buttes'



Grow Low Fragrant Sumac
Rhus aromatica 'Grow Low'



Arp Rosemary*
Rosmarinus officinalis 'Arp'

GRASSES



Blonde Ambition Blue Grama*
Bouteloua gracilis 'Blonde Ambition'



Standing Ovation Little Bluestem
Schizachyrium scoparium 'Standing Ovation'

PERENNIALS



Moonshine Yarrow
Achillea x 'Moonshine'



Golden Dalea
Dalea capitata



Kannah Creek Sulphur Buckwheat
Eriogonum umbellatum var. *aureum* 'Psdowns'



Gaura 'Whirling Butterflies'
Gaura lindheimeri 'Whirling Butterflies'



Walker's Low Catmint
Nepeta racemosa 'Walker's Low'



Mexican Sage
Salvia darcyi



Garden Sage
Salvia officinalis



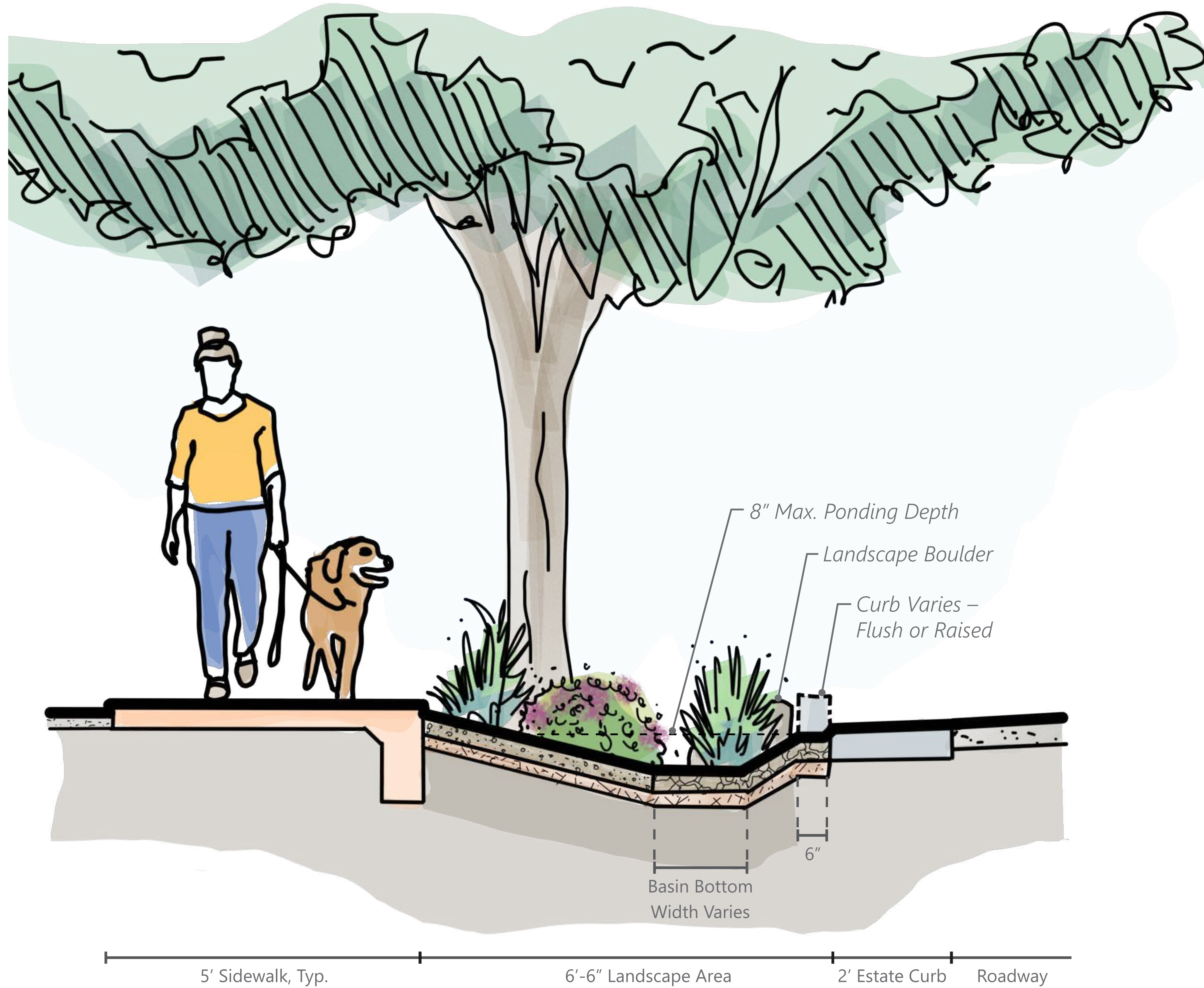
Munro's Globe Mallow
Sphaeralcea munroana

* Plants included in the Phase 1 Planting Palette

4TH STREET REVITALIZATION – PHASE 2

Green Stormwater Infrastructure (GSI)

TYPICAL PARKWAY SECTION



DESIGN PRECEDENTS

RAINWATER HARVESTING IN PARKWAYS



Rincon Heights Neighborhood
Tucson, AZ



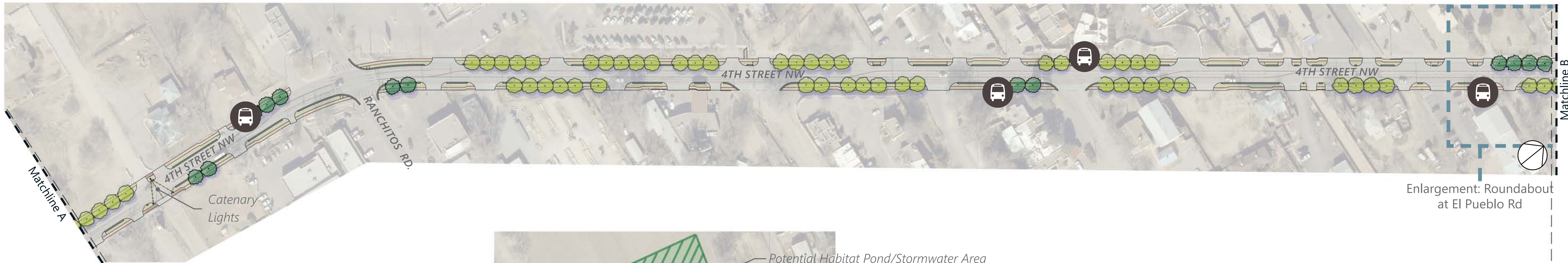
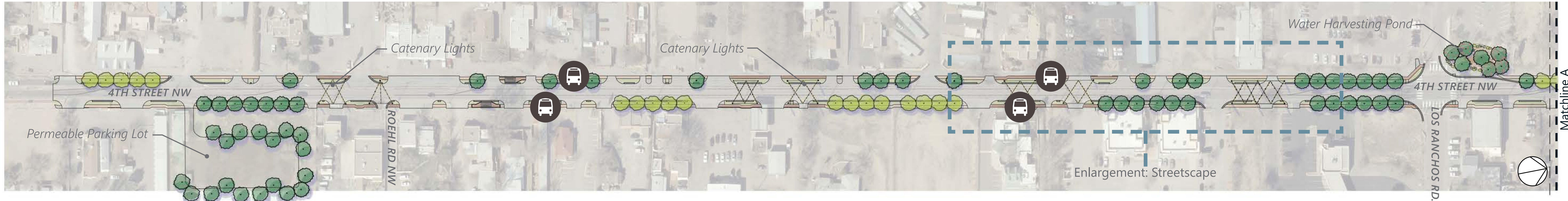
Dunbar Springs Neighborhood
Tucson, AZ



South Second St
Albuquerque, NM

4TH STREET REVITALIZATION – PHASE 2

Overall Plan



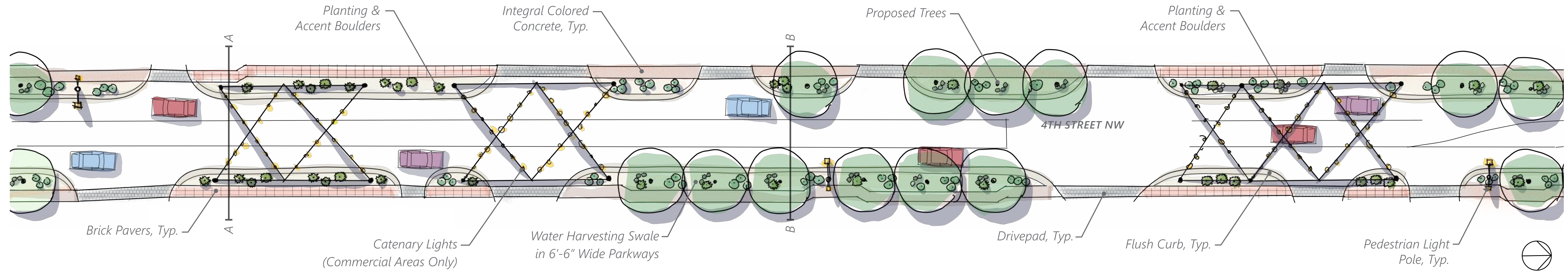
LEGEND

| | | | |
|--|---|--|------------------|
| | Proposed Tree | | Landscaped Area |
| | Proposed Tree (Potential Gas Line Conflict) | | Riccobene Pavers |
| | Bus Stops | | Colored Concrete |
| | Public Art Opportunity | | Brick Pavers |
| | Trailhead | | Potential Pond |

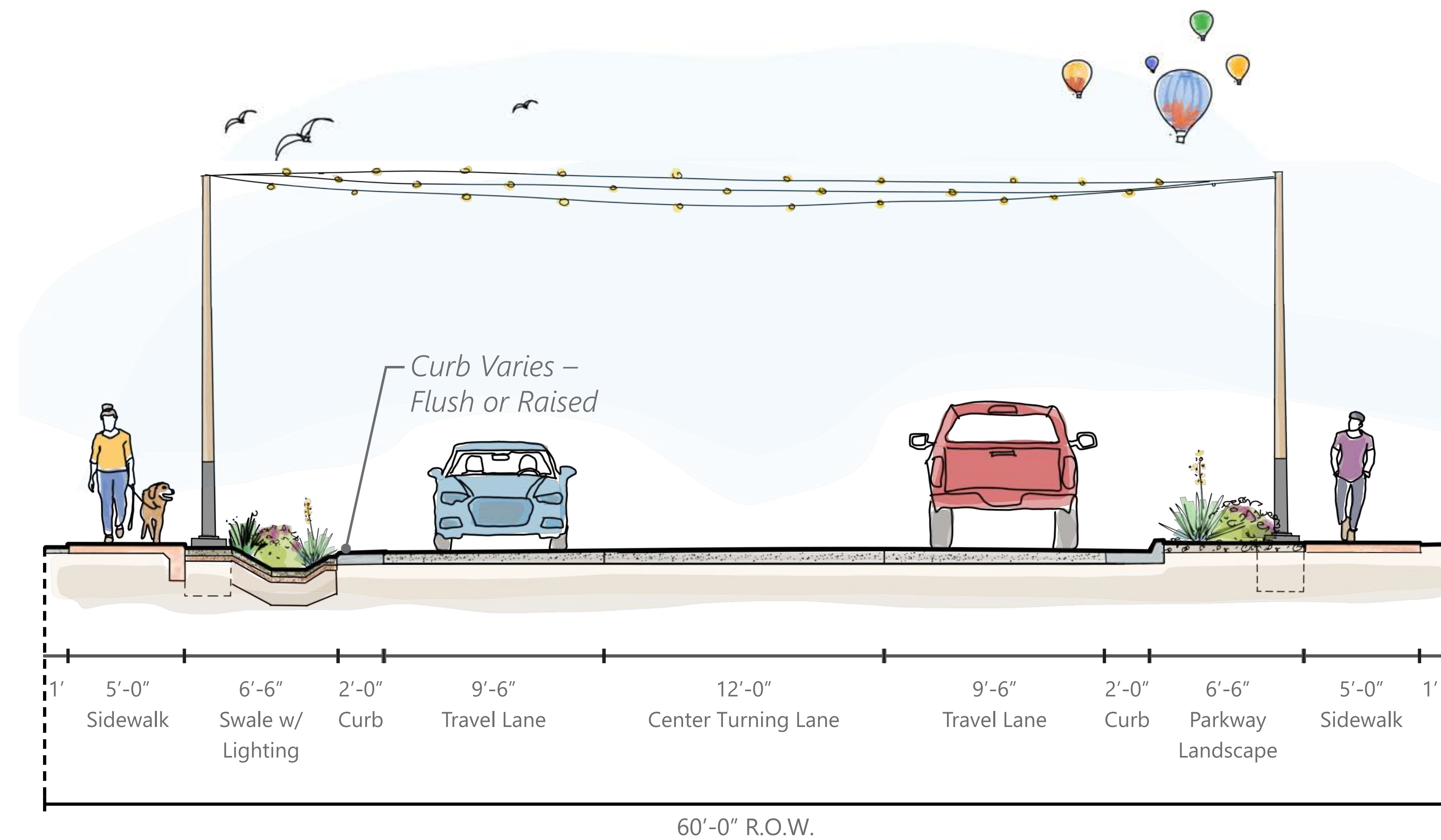
4TH STREET REVITALIZATION – PHASE 2

Typical Streetscape Enlargement & Sections

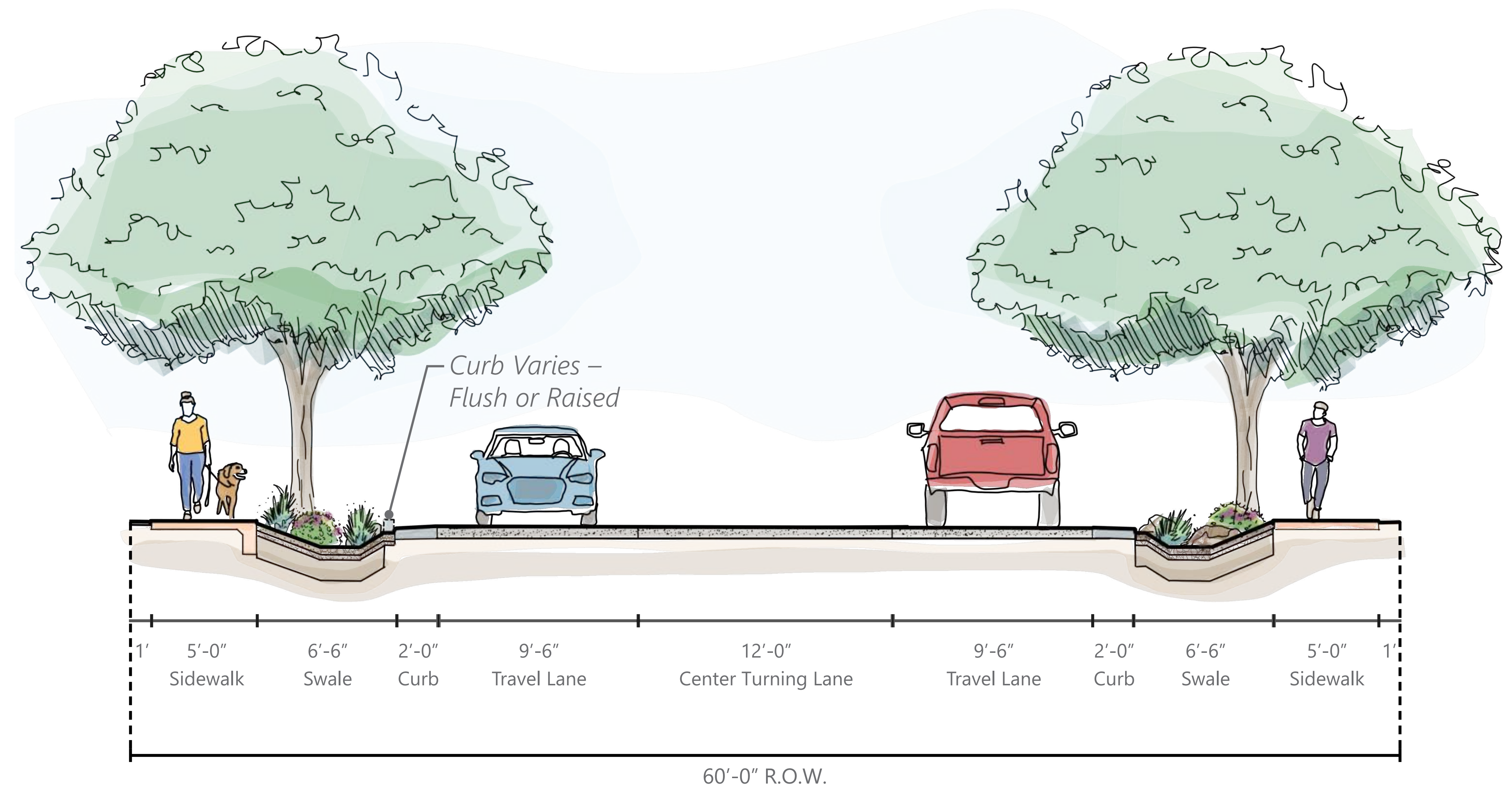
STREETSCAPE ENLARGEMENT WITH LIGHTING



SECTION A



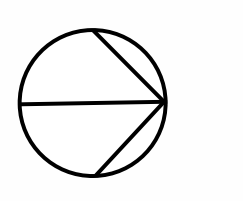
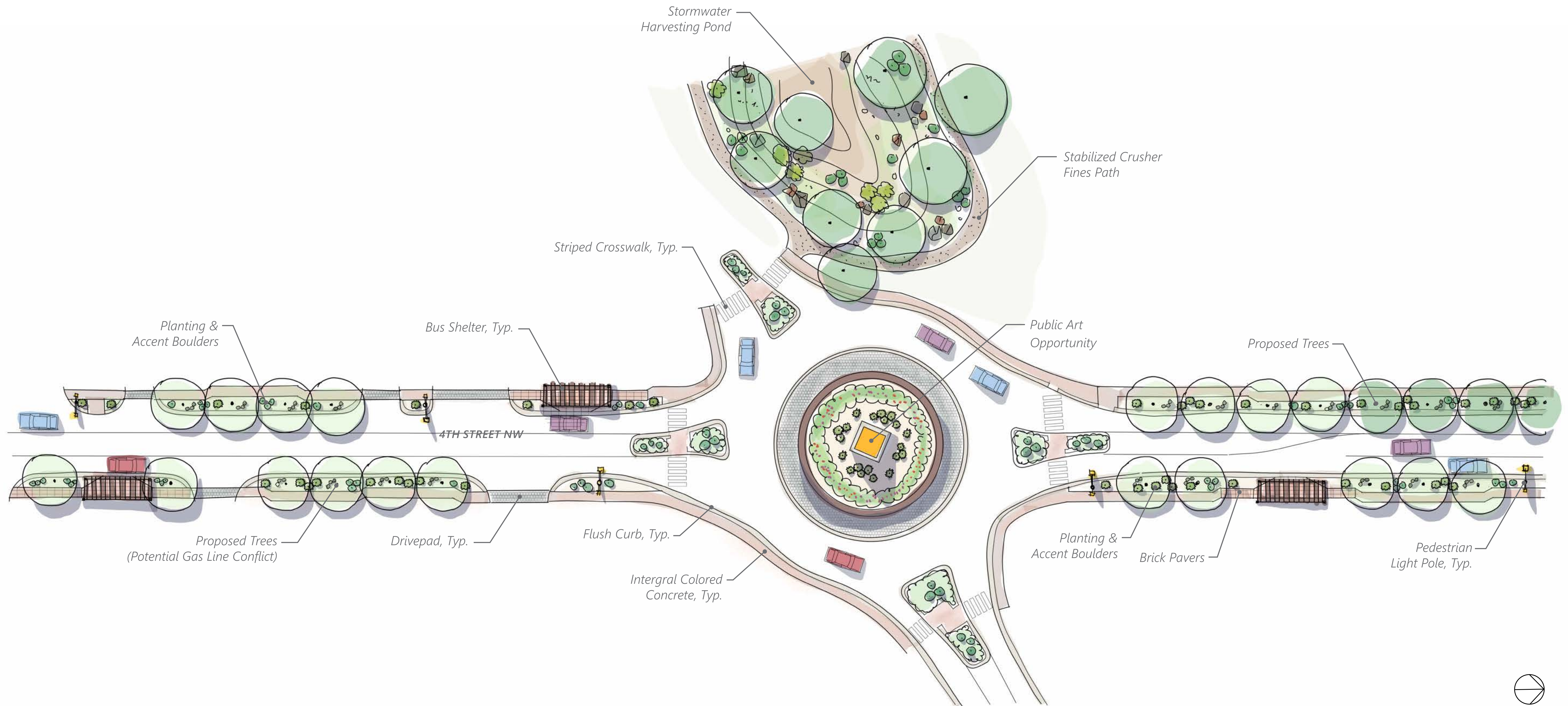
SECTION B



4TH STREET REVITALIZATION – PHASE 2

Roundabout Enlargement

ROUNABOUT AT EL PUEBLO RD



4TH STREET REVITALIZATION – PHASE 2

QUESTIONS?

THANK YOU!